


**Stormtech**

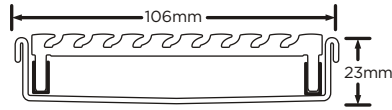
TM

Order and Quote Form

# Made-to-Length Linear Drainage › Multiple Outlet

**Select Grate Style**

**Product Code** 100AAi20MTL  
**Grate Style** Wave Grate  
**Stormtech Range** 100  
**Channel Material** Stainless Steel  
**Grate Material** Aluminium

**Section View**


100AAi20MTL

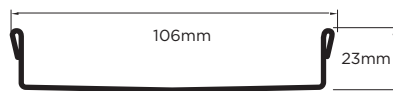
**Finish / Code**

**Aluminium**  100AAi20MTL  
**Matte Black**  100AAi20MTL-Black  
**Brass Gold**  100AAi20MTL-BG

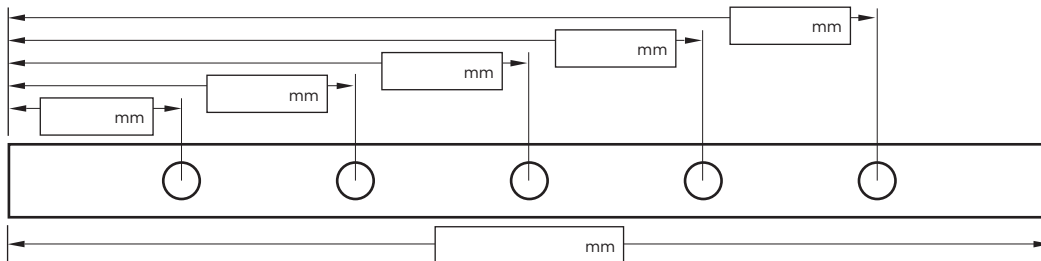
Please note: Only Aluminium grate is finished, channel is stainless steel

**Tray Profile**

100 Range

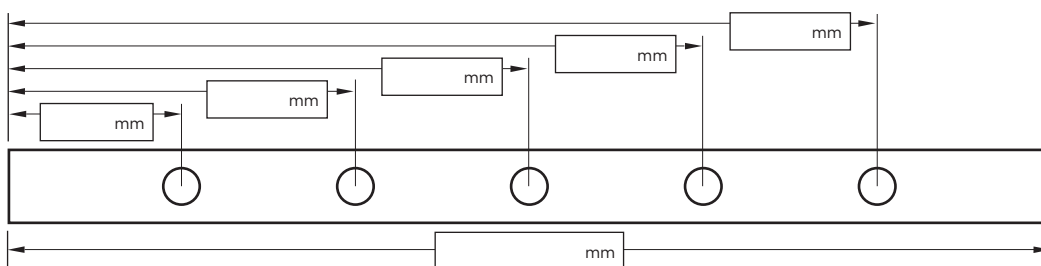


Profile 1

**Specify Length, Outlet Positions/Size and Profile Required**

**Drain 1**
**Profile Required**
 1

**Outlet Size**

38mm  44mm  51mm  
 63mm  76mm  89mm


**Drain 2**
**Profile Required**
 1

**Outlet Size**

38mm  44mm  51mm  
 63mm  76mm  89mm

**NOTE:** See AS3500 standard & local regulator for specific outlet/drain requirements. Outlet Size must be smaller than selected Range. MND grate style not available with Profiles 2 or 4. Stainless Steel Grade is 316 unless specified. Made-to-Length (MTL) minimum charge of 800mm. Grates over 1500mm are supplied in multiple sections. Channels over 3000mm are supplied in multiple sections with joiner. Orders received after 11am are processed next working day. +/- 2mm tolerance on dimensions.

**Full Name**

**Email Address**

**Company Name**

**Signature**
**Telephone**

**Phone** 01483 346 460

**Email** [technical@slimlinedrain.co.uk](mailto:technical@slimlinedrain.co.uk)
**slimlinedrain.co.uk**