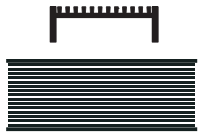


Order and Quote Form

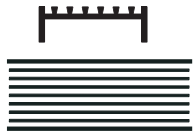
Made-to-Length Linear Drainage › Multiple Outlet



Select Grate Style



AR Architectural
2mm wire
2.5mm gap



TR Standard
3mm wire
5mm gap



PS Punched Slot



MND Marc Newson



PAS Punched Angle Slot



PPS Punched Perpendicular Slot

Tray Profiles

100 Range



Profile 1

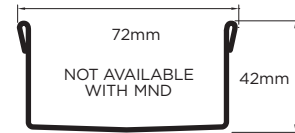


Profile 2

65 Range

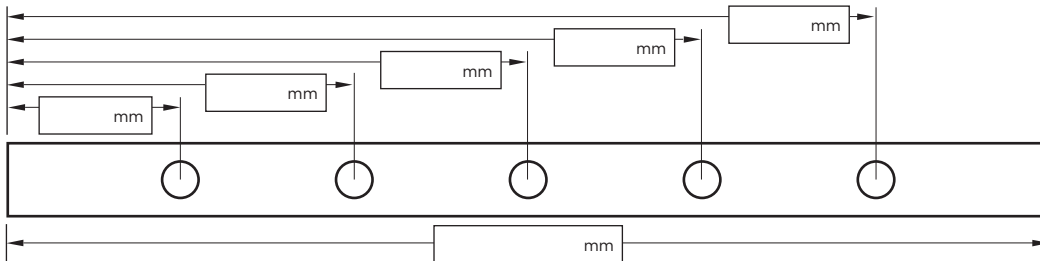


Profile 3



Profile 4

Specify Length, Outlet Positions/Size and Profile Required



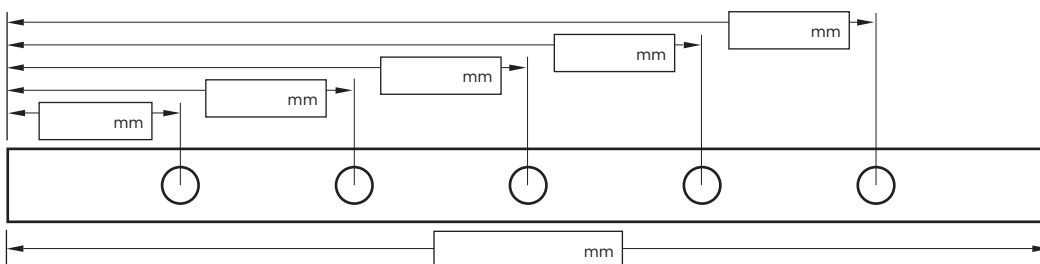
Drain 1

Profile Required

1 2 3 4

Outlet Size

38mm 44mm 51mm
 63mm 76mm 89mm



Drain 2

Profile Required

1 2 3 4

Outlet Size

38mm 44mm 51mm
 63mm 76mm 89mm

NOTE: See AS3500 standard & local regulator for specific outlet/drain requirements. Outlet Size must be smaller than selected Range. MND grate style not available with Profiles 2 or 4. Stainless Steel Grade is 316 unless specified. Made-to-Length (MTL) minimum charge of 800mm. Grates over 1500mm are supplied in multiple sections. Channels over 3000mm are supplied in multiple sections with joiner. +/- 2mm tolerance on dimensions.

Full Name

Email Address

Company Name

Signature

Telephone

Phone 01483 346 460

Email technical@slimlinedrain.co.uk

slimlinedrain.co.uk