

ARCHITECTURAL GRATES + DRAINS



65TiTDi

Tile Insert Drain

Stormtech is the only linear drainage system available with full Greentag and Watermark certification across our complete product range.

Telephone 01483 346460 | Web slimlinedrain.co.uk





ARCHITECTURAL
GRATES + DRAINS



65TiTDi

Tile Insert Drain



The 65TiTDi is a Threshold Drain for door track with sub sill tray featuring our 65mm wide Tile Insert.

For sliding and Hinged doors.

Featuring a linear stainless steel grate with concealed channel section connecting sill and sub-sill for door tracks and thresholds.

Allows door sills to be drained while having internal and external floor surfaces with no step down.

Please be aware that depending on the installation environment, for a pool installation or close to a surf beach, you may need to have your stainless steel grates electropolished.

Code 65TiTDi

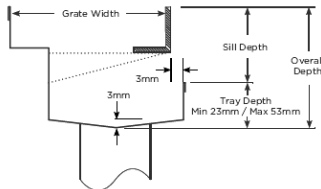
Range Threshold

Grate Style Ti

Category Made-to-Length

Channel Material Stainless Steel

Steel Grade 316



Grates longer than 1500mm supplied in sections.
Tile Inserts longer than 1200mm supplied in sections.
Channels over 3000mm supplied in sections with joiner.

SPECIFICATIONS + DIMENSIONS

Channel Width	75mm
Channel Depth	Adjustable
Length(s)	As Required
Outlet Size	N/A

STORMTECH COLOUR FINISHES



Stainless Steel Polished Stainless Steel Matt Black Gunmetal Grey Bronze Copper Brass

Electroplate finishes subject to natural variation with time and local environment.

PRODUCT APPLICATIONS

- Aged / Health Care Drainage
- Balcony Drainage
- Commercial Drainage
- Multi-Residential Drainage
- Special Needs Drainage
- Threshold Drainage
- Suspended Slab Drainage

Copyright © Stormtech Pty Ltd. Patent 733361. Drawings not to scale, please use dimensions shown.

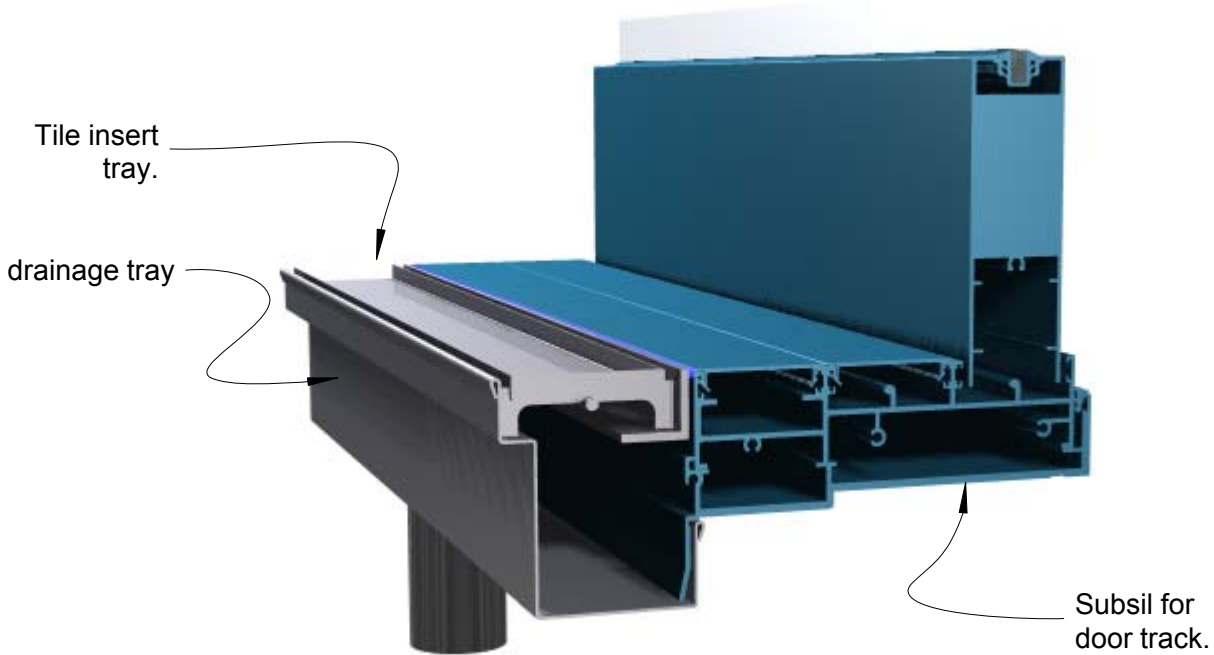


Visit slimlinedrain.co.uk
for tools + inspiration.

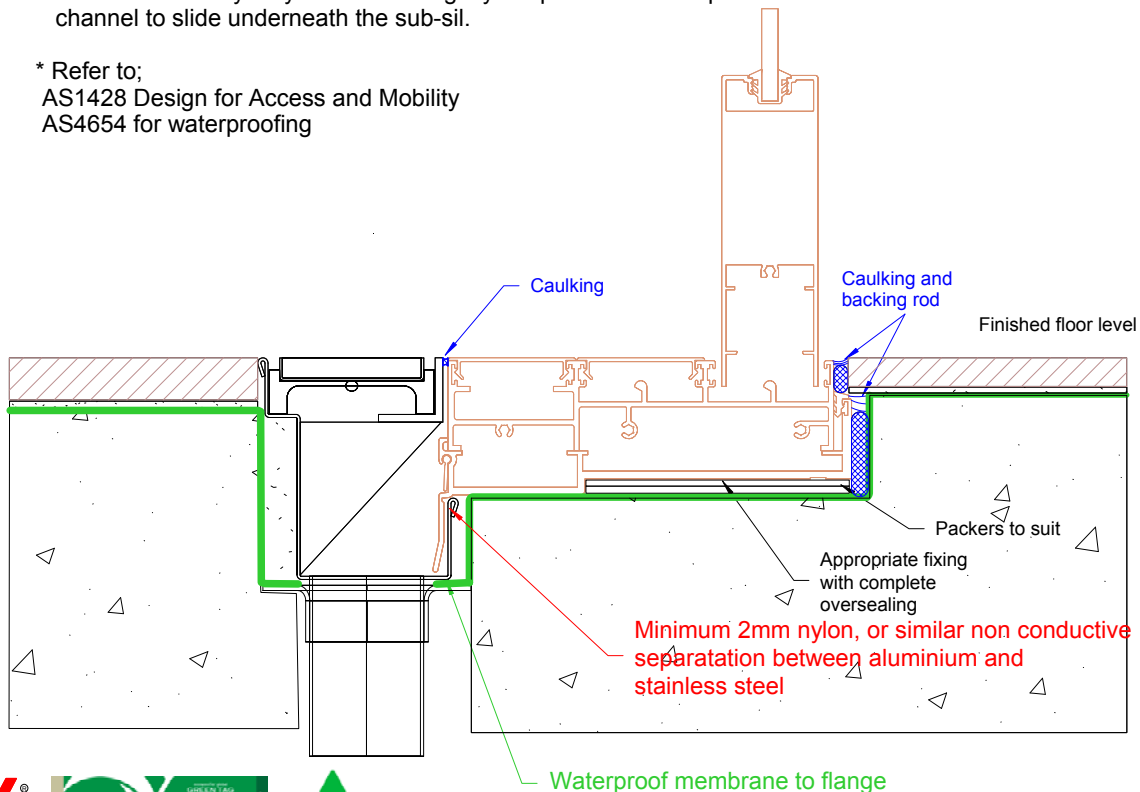
Phone 01483 346460

Email technical@slimlinedrain.co.uk

65TiTDi Linear threshold Drainage System



- * The entire door track and 65TiTDi are set in above and separate to waterproofing. Therefore waterproofing must be completed first.
- * Install the door track sub-sil.
- * When installing the 65TiTDi, the tray needs to be slightly deeper than the lowest part of the Sub-sil.
- * Standard installation sequence generally has the door track sub-sil in place before the drain. Therefore the tray may need to be slightly deeper than lowest part of the sub-sil to allow the drain channel to slide underneath the sub-sil.
- * Refer to;
AS1428 Design for Access and Mobility
AS4654 for waterproofing



Visit slimlinedrain.co.uk

