

ARCHITECTURAL GRATES + DRAINS



SQ100Ti20-100

Tile Insert Drain

Stormtech is the only linear drainage system available with full Greentag and Watermark certification across our complete product range.

Telephone 1300 653 403 | Web stormtech.com.au



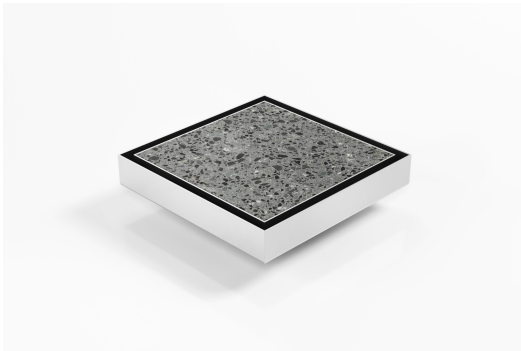


ARCHITECTURAL
GRATES + DRAINS



SQ100Ti20-100

Tile Insert Drain



Square Floor waste with Tile Insert

The SQ100Ti is a standard floor waste drain.

The SQ Range of floor waste units allow the integration of a standard floor waste with Stormtech linear drainage.

Tile Insert Floor waste measures 130mm x 130mm.

Code SQ100Ti20-100

Range Square

Grate Style Ti

Category Fixed-Length Units

Channel Material Stainless Steel

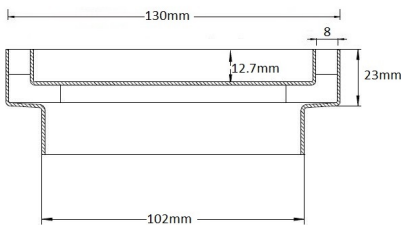
Steel Grade 316

It is suitable for tiles up to 12mm thick.

Available with 101mm outlet

SPECIFICATIONS + DIMENSIONS

Channel Width	130mm
Channel Depth	23mm
Length(s)	130mm
Outlet Size	DN100



Grates longer than 1500mm supplied in sections.
Tile Inserts longer than 1200mm supplied in sections.
Channels over 3000mm supplied in sections with joiner.
+/-2mm tolerance on dimensions.

STORMTECH COLOUR FINISHES



Electroplate finishes subject to natural variation with time and local environment. Factors such as pools/surf beaches may require electropolishing. Contact us for suitability.

PRODUCT APPLICATIONS

- Bathroom Drainage
- Balcony Drainage
- Commercial Drainage
- Courtyard / Patio Drainage
- Paved Area Drainage
- Shower Drainage
- Multi-Residential Drainage
- Wet Area Drainage

Copyright © Stormtech Pty Ltd. Patent 733361. Drawings not to scale, please use dimensions shown.



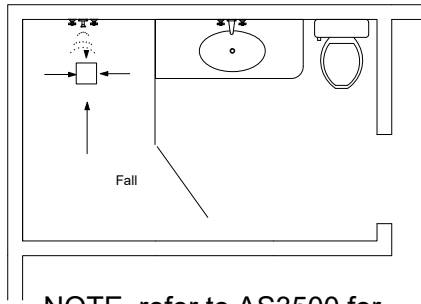
Visit stormtech.com.au
for tools + inspiration.

Phone **1300 653 403**

Email info@stormtech.com.au

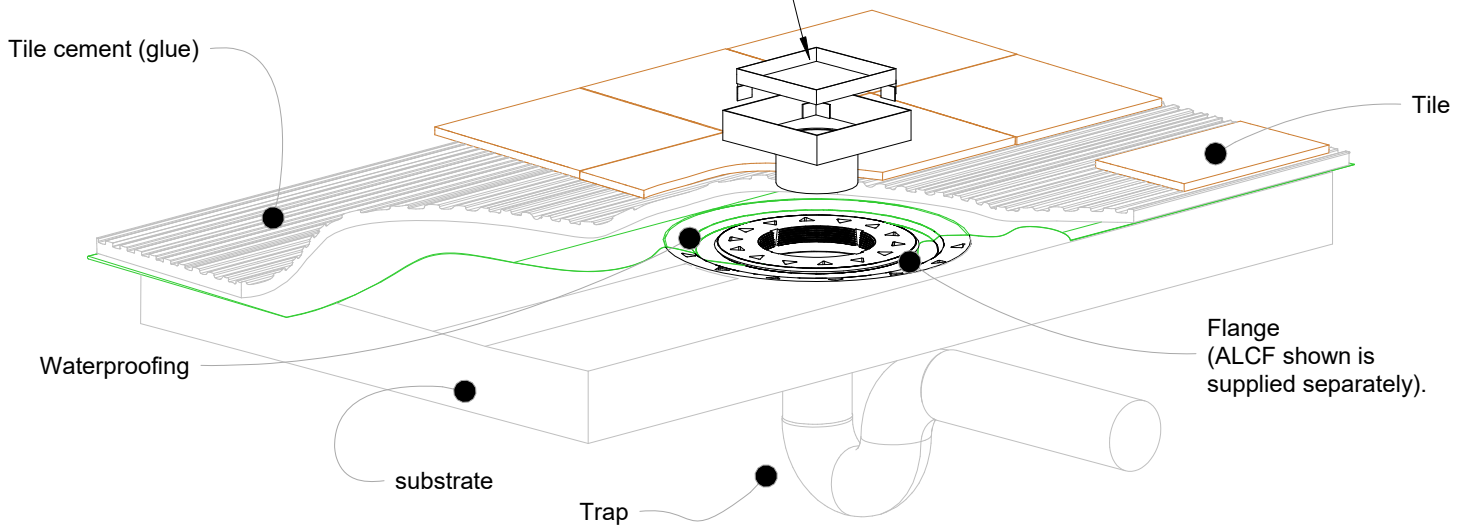
SQ100Ti Bathroom

For SQ100Ti30 and SQ100Ti20, and 'P' versions

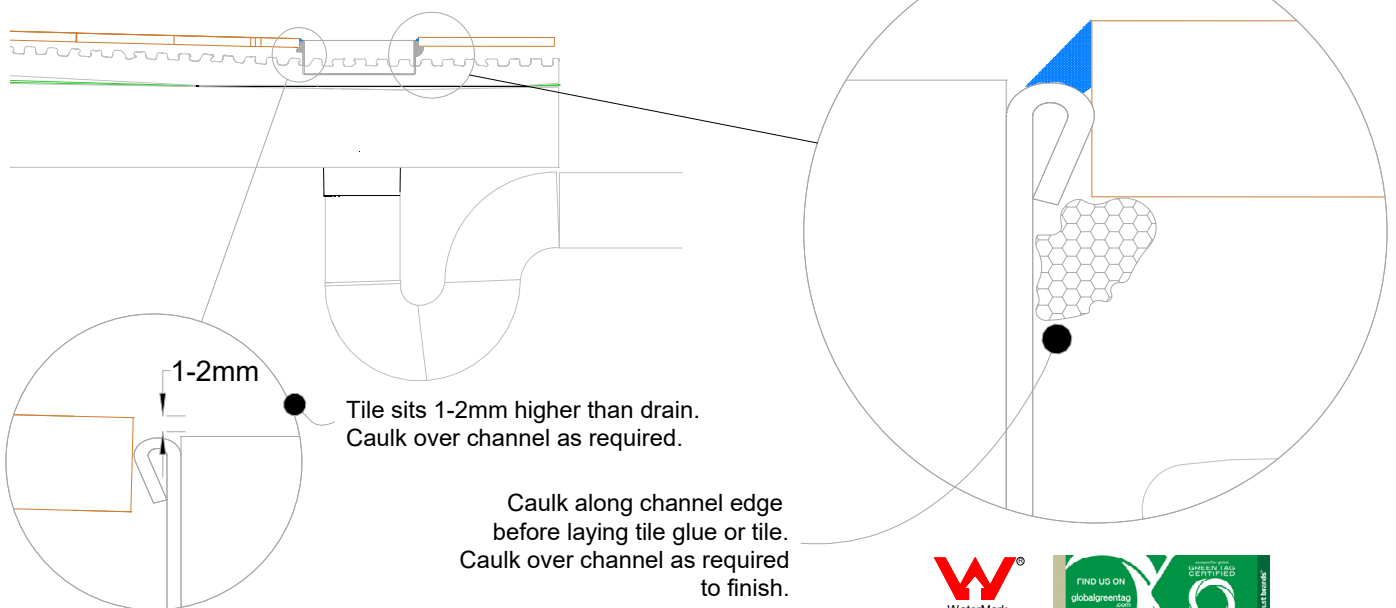


NOTE, refer to AS3500 for specific outlet pipe sizes related to your specific installation.

Cut tile to width and fix into tray. To ensure no metal contamination causes spalling below the tile. It is recommended to use a paint-on waterproof membrane on the interior of the tile insert tray before tiling to ensure no contaminants are trapped below against the stainless.



NOTE, this method requires the drain body to be above and separate from the waterproofing. Ensure the floor falls to drain are at least 1:80. Maximum flow rate at outlet is 23 litres per minute with 5mm head above top edge of drain.



Visit stormtech.com.au



StormtechTM

22 Norfolk Avenue, South Nowra, NSW 2541 Australia
Phone 1300 653 403 Email info@stormtech.com.au

