

ARCHITECTURAL **GRATES + DRAINS**



# 100TiG20

## Tile Insert Drain

Stormtech is the only linear drainage system available with full  
Greentag and Watermark certification across our complete product range.

**Telephone** 01483 346460 | **Web** [slimlinedrain.co.uk](http://slimlinedrain.co.uk)





ARCHITECTURAL  
GRATES + DRAINS



# 100TiG20

## Tile Insert Drain



The 100TiG20 is a modular drainage system with a stainless steel tile insert and uPVC channel and fittings.

The 100TiG20 is a Tile Insert Drain manufactured from 1.5mm thick 316 marine grade stainless steel.

Suitable for tiles up to 10mm thick.

**Code** 100TiG20

**Range** 100

**Grate Style** Ti

**Category** Modular Kits

**Channel Material** uPVC

**Steel Grade** 316

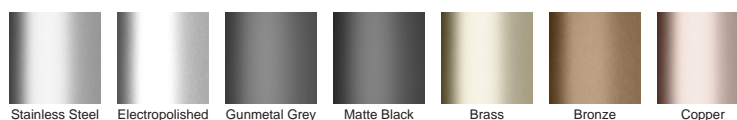


Grates longer than 1500mm supplied in sections. Tile Inserts longer than 1200mm supplied in sections. Channels over 3000mm supplied in sections with joiner. +/-2mm tolerance on dimensions.

### SPECIFICATIONS + DIMENSIONS

<b>Channel Width</b>	106mm
<b>Channel Depth</b>	23mm
<b>Length(s)</b>	900mm 1000mm 1200mm 1500mm 1800mm 2000mm 2400mm 2700mm 3000mm
<b>Outlet Size</b>	DN80, DN100

### STORMTECH COLOUR FINISHES



Electroplate finishes subject to natural variation with time and local environment. Factors such as pools/surf beaches may require electropolishing. Contact us for suitability.

### PRODUCT APPLICATIONS

Bathroom Drainage  
Aged / Health Care Drainage  
Balcony Drainage  
Commercial Drainage  
Hospitality Drainage  
Shower Drainage

Multi-Residential Drainage  
Special Needs Drainage  
Threshold Drainage

Copyright © Stormtech Pty Ltd. Patent 733361. Drawings not to scale, please use dimensions shown.  
Downloaded 20/03/2025 (please check for updates)



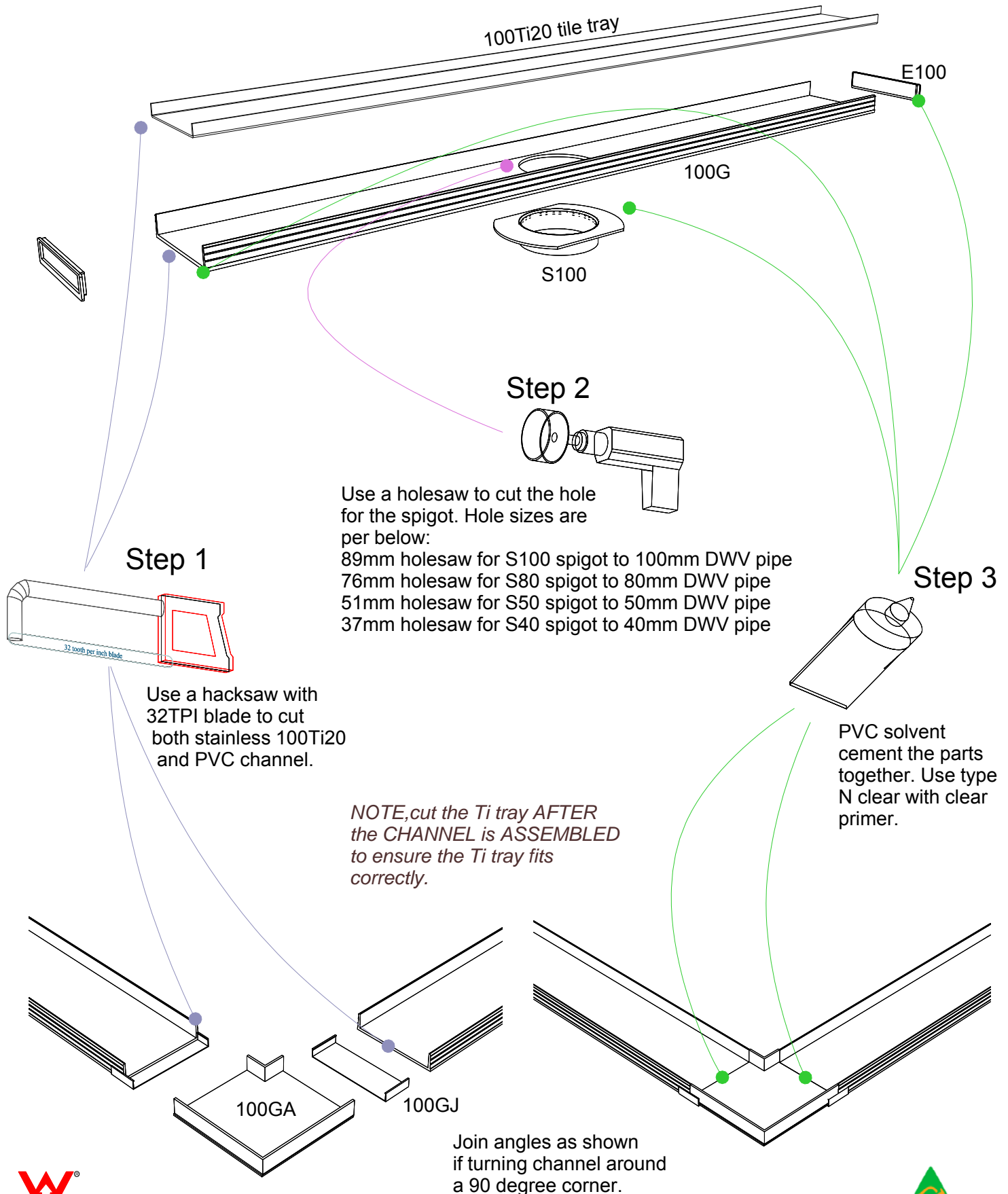
Visit [slimlinedrain.co.uk](https://slimlinedrain.co.uk)  
for tools + inspiration.

Phone 01483 346460

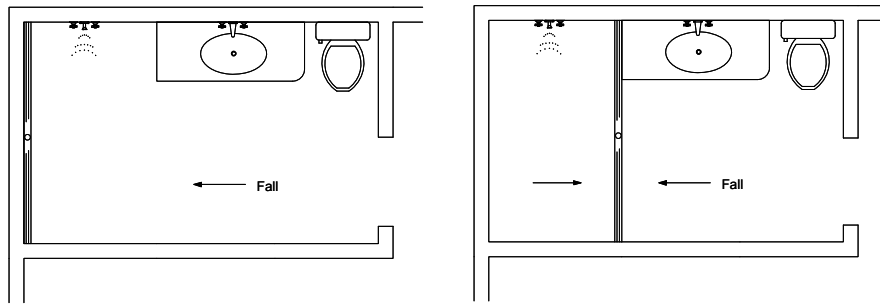
Email [technical@slimlinedrain.co.uk](mailto:technical@slimlinedrain.co.uk)

# 100TiG20 Assembly.

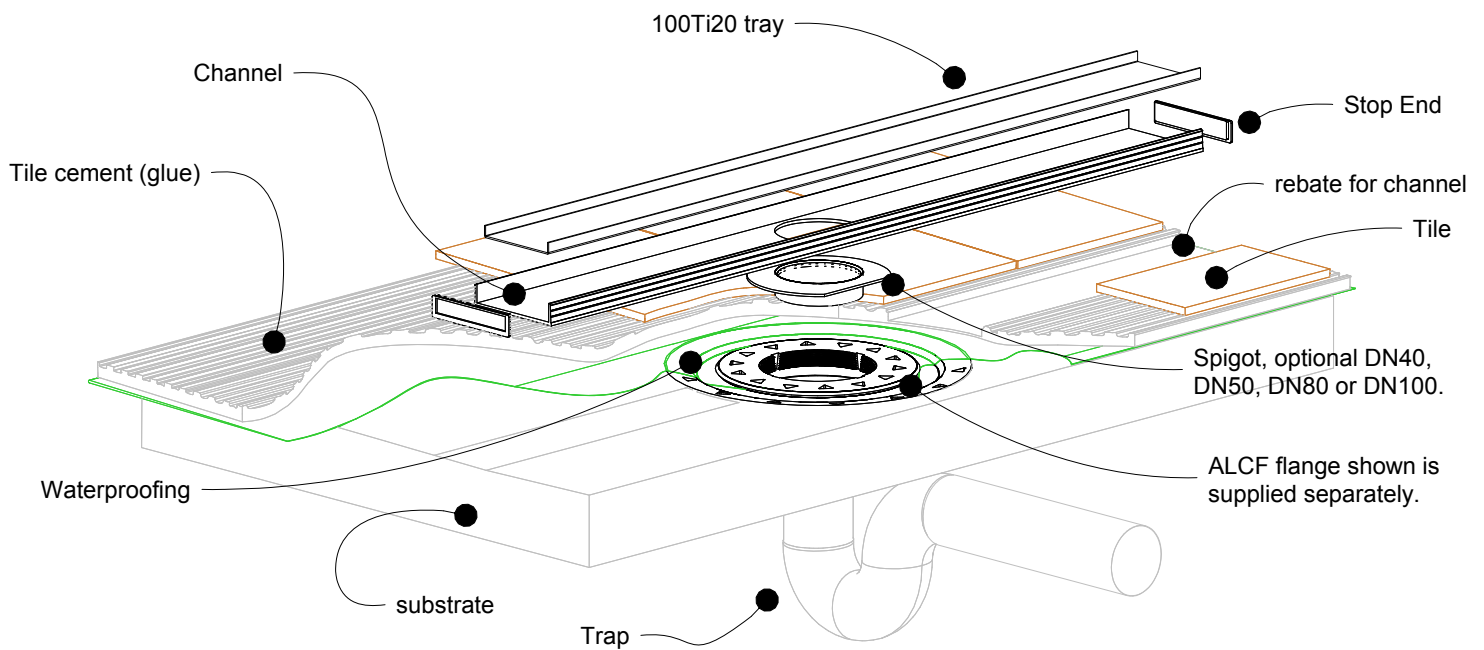
*NOTE, longest length of Ti tray 1200mm.  
longest run possible 2.0m*



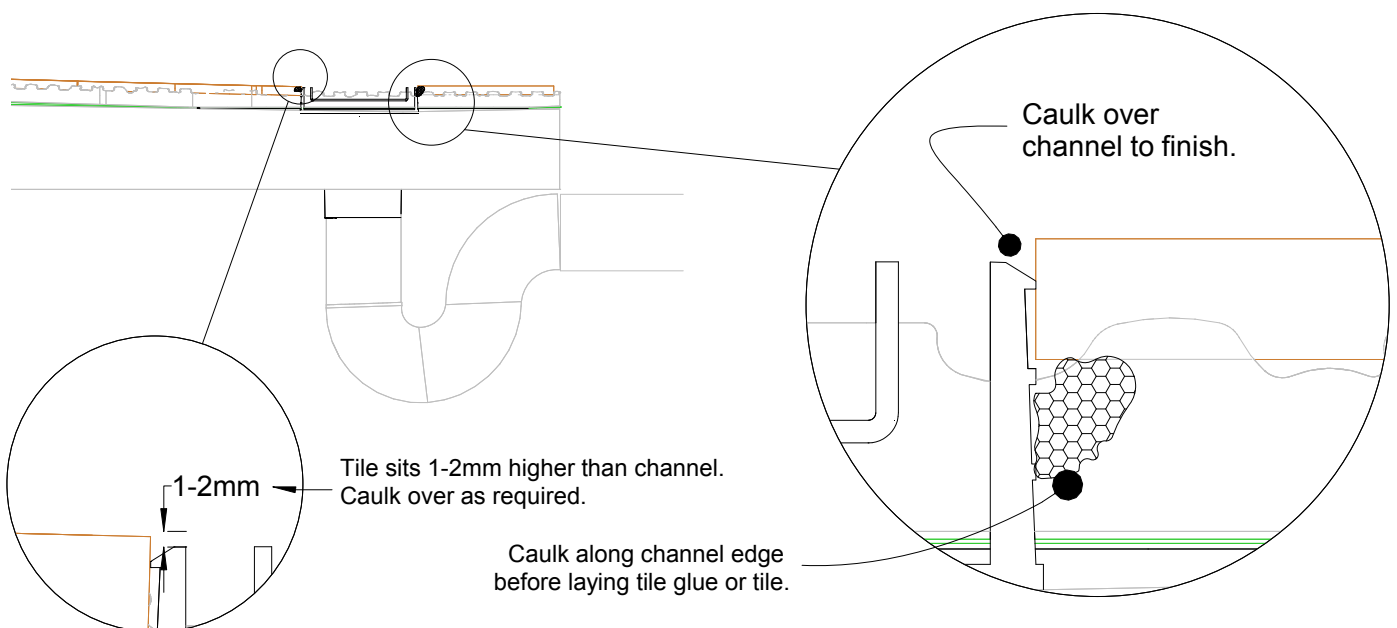
# 100TiG20 Bathroom



NOTE, ensure pipe sizes and outlet sizes selected are as per requirements in AS3500.



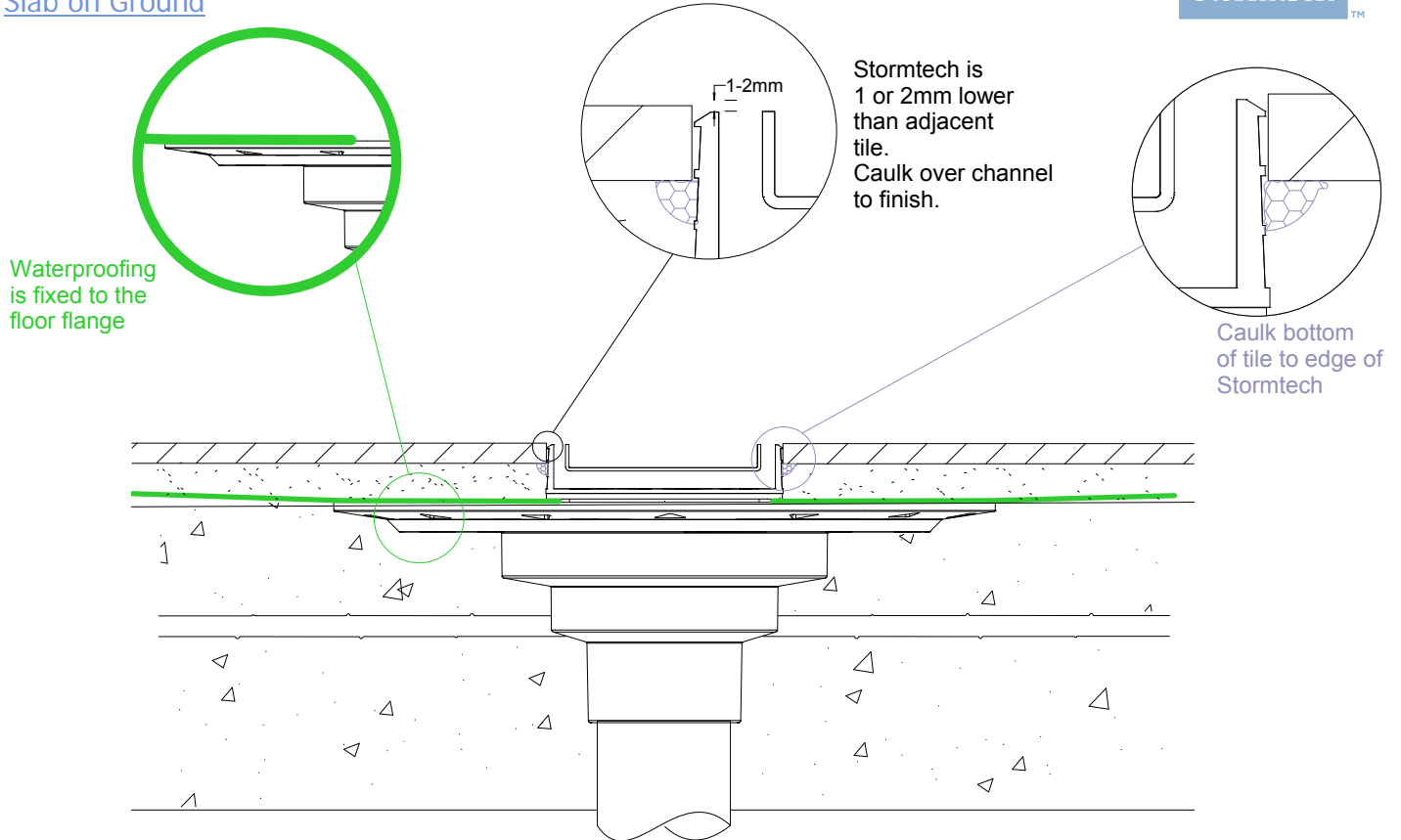
NOTE, this method requires the channel system to be ABOVE and SEPARATE from the WATERPROOFING.



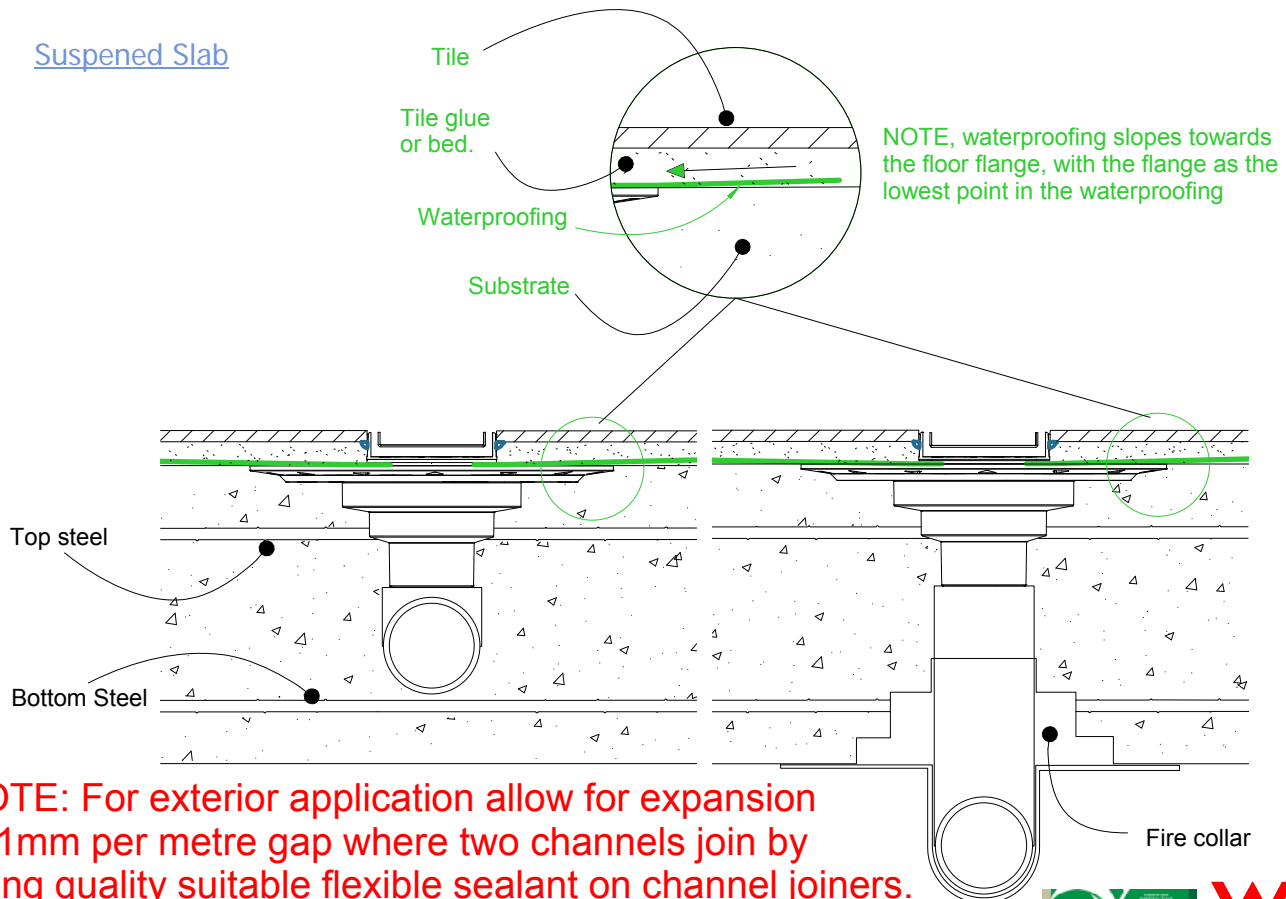
# 100TiG20 Concrete Floor or Deck



## Slab on Ground



## Suspended Slab



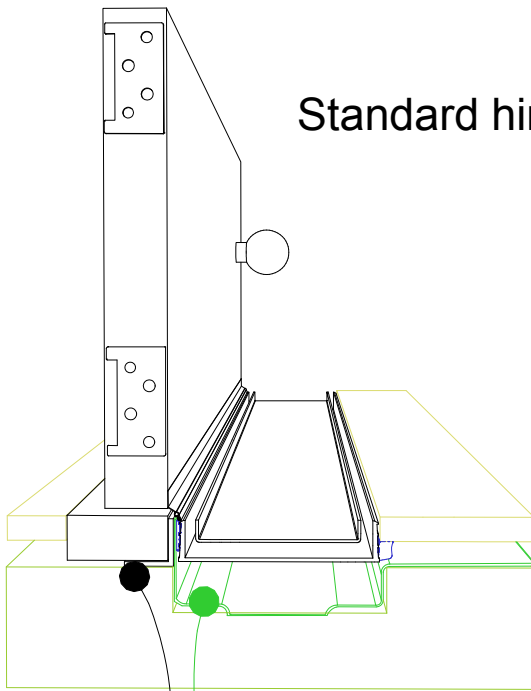
**NOTE: For exterior application allow for expansion of 1mm per metre gap where two channels join by using quality suitable flexible sealant on channel joiners. Use PVC solvent cement for ends and outlets.**



# 100TiG20 Threshold installation suggestion



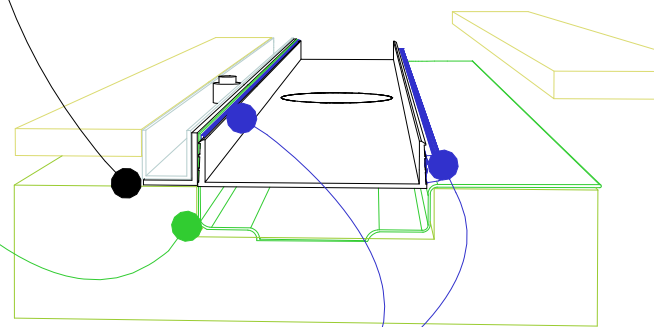
## Standard hinged door



Aluminium angle to support waterproofing and junction between channel and door sil.

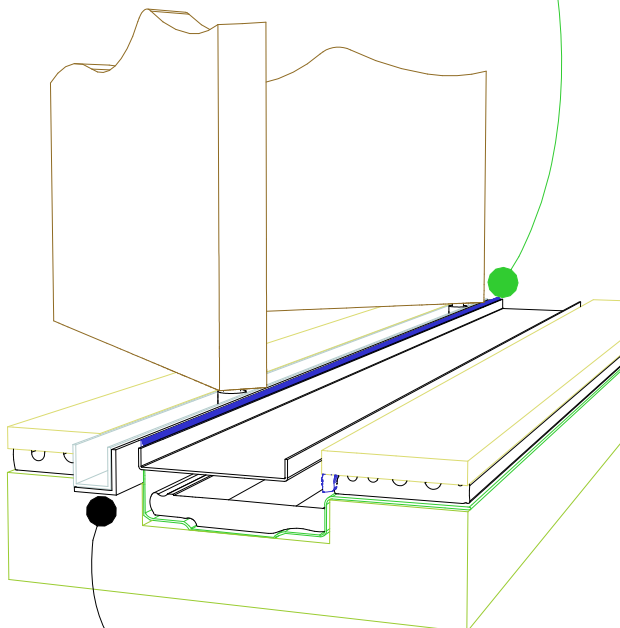
## Top hung slider

Aluminium angle to support waterproofing and junction between channel and door track.



For all types of threshold installation ensure both sides of the channel are sealed before laying tile.

## Bi-fold door



Aluminium angle to support waterproofing and junction between channel and door track.

NOTE, ensure weather stip is used on the appropriate side of the door to ensure drafts and moisture are minimised.

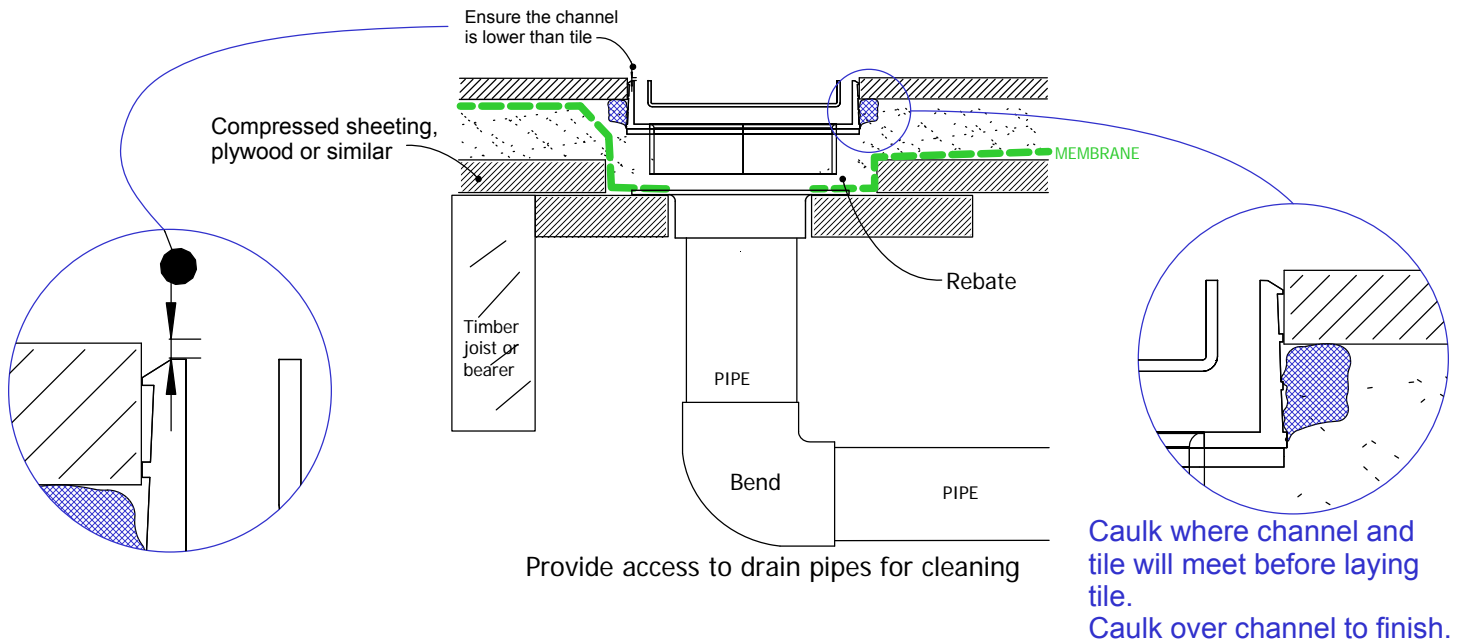
**NOTE, ALWAYS ensure the waterproofing is completed before laying the Stormtech.**



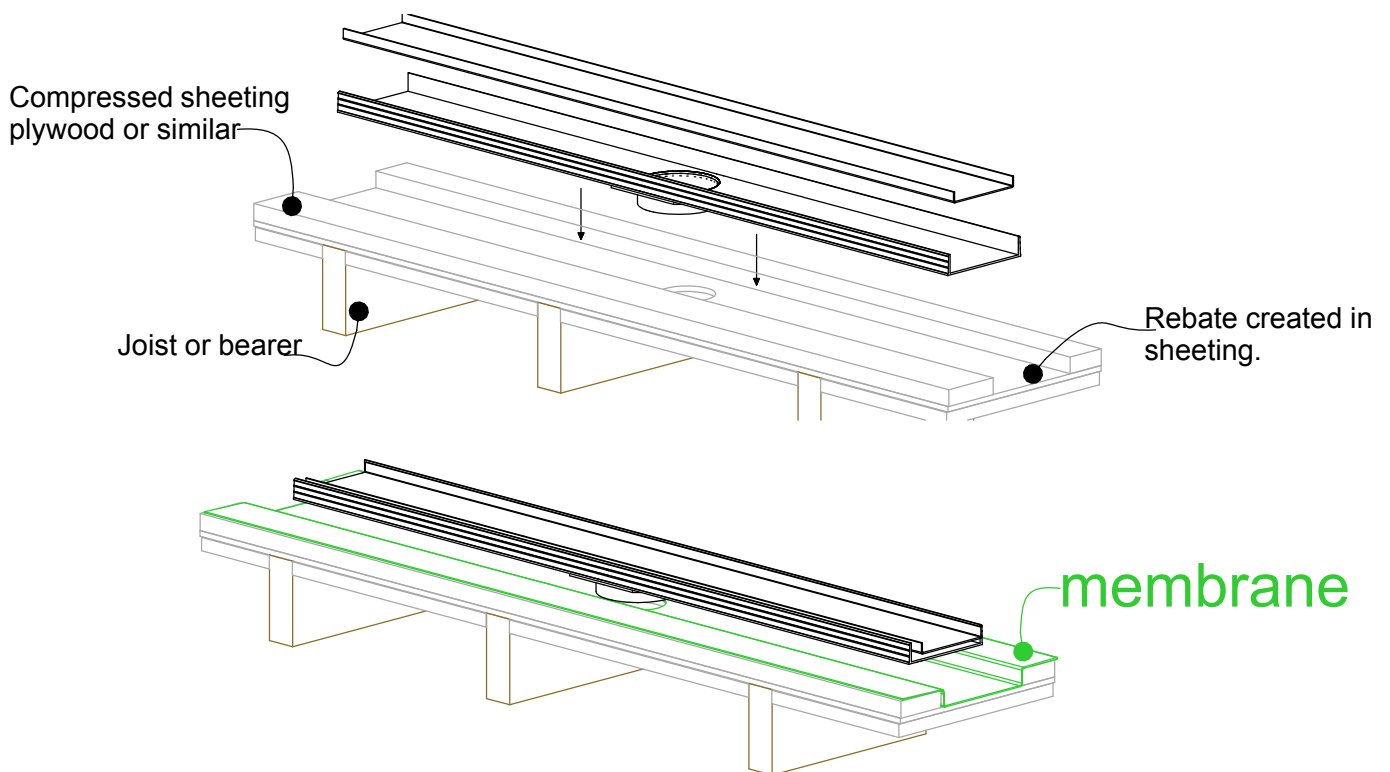
# 100TiG20 TIMBER FLOOR/DECK



## When 100TiG20 is running parallel to joist/bearer



## When 100TiG20 is running perpendicular to joist/bearer

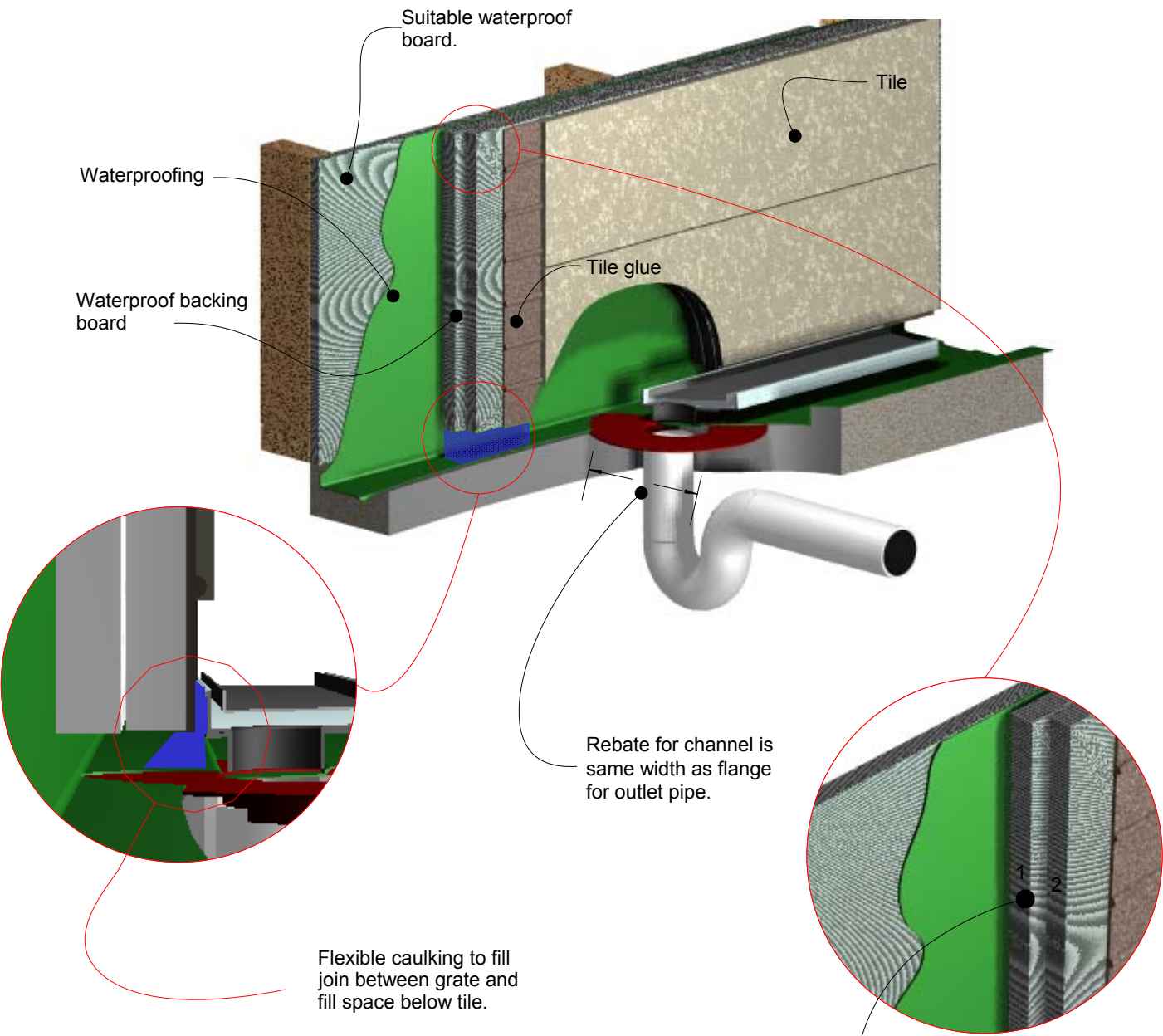


**NOTE: For exterior application allow for expansion of 1mm per metre by using quality suitable flexible sealant on channel joins. Use PVC solvent cement and primer on ends and outlets.**





# 100TiG20 Against Wall



NOTE, due to the diameter of leak control or puddle flanges up to two layers of waterproof backing board or villa board may be needed to pack out wall before tiling.





Visit **[slimlinedrain.co.uk](http://slimlinedrain.co.uk)**

