



SLIM LINE DRAIN

Product Brochure

01483 346 460

www.slimlinedrain.co.uk

technical@slimlinedrain.co.uk





Linear Channel Drain

Made-to-Length Units

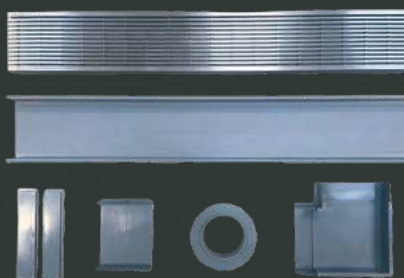
A complete stainless steel drainage unit ready for installation with custom outlet size and position. Available with custom floor and wall flanges to suite required depth. All fittings (End Caps, Spigot, Corner Pieces, Straight Connectors) are welded to the channel.

Modular Kits

Modular site finished system designed for flexibility and ease of installation.

Available lengths 900mm, 1000mm, 1200mm & 1500mm. Joiners and angle joiners available for unrestricted lengths and corner installations.

Kits include Grating, uPVC Channel Base, End Caps, Spigot, Joint Connectors and Corner Sections if required.



Electropolishing and Powder Coating available at an additional cost.

T: 01483 346 460

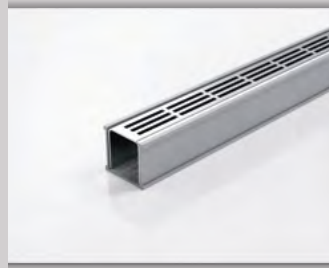
E: technical@slimlinedrain.co.uk

W: slimlinedrain.co.uk



Linear Channel Drain - 38/40 Range

42mm (W) x 48mm (D)



38PSG40



38ARG40

Modular Kits with a uPVC Channel Base

Product Code	Outer Dimensions	Lengths	Grate Material	Compatible Spigot
38PSG40	46mm (W) x 42mm (D)	1200mm, 1500mm	316 Stainless Steel	DN40
38ARG40	46mm (W) x 42mm (D)	1200mm, 1500mm	316 Stainless Steel	DN40

*Delivery charges apply or collection available from Guildford, Surrey. Next day delivery available subject to stock levels.



38PSi40



38ARi40

Made-to-Length Kits with a 316 Stainless Steel Channel Base

Product Code	Outer Dimensions	Lengths	Grate Material	Compatible Spigot
38PSi40	46mm (W) x 42mm (D)	Custom	316 Stainless Steel	Custom Size and Position
38ARi40	46mm (W) x 42mm (D)	Custom	316 Stainless Steel	Custom Size and Position

*Delivery charges apply or collection available from Guildford, Surrey. Lead time 3 weeks.



Linear Channel Drain - 65/25 Range

74mm (W) x 27mm (D)



65PSG25



65PPSG25



65PASG25



65MNDG25



65TRG25



65ARG25

Modular Kits with a uPVC Channel Base

Product Code	Outer Dimensions	Lengths	Grate Material	Compatible Spigot
65PSG25	74mm (W) x 27mm (D)	900mm, 1000mm, 1200mm, 1500mm	316 Stainless Steel	DN40, DN50
65PPSG25	74mm (W) x 27mm (D)	900mm, 1000mm, 1200mm, 1500mm	316 Stainless Steel	DN40, DN50
65PASG25	74mm (W) x 27mm (D)	900mm, 1000mm, 1200mm, 1500mm	316 Stainless Steel	DN40, DN50
65MNDG25	74mm (W) x 27mm (D)	900mm, 1000mm, 1200mm, 1500mm	316 Stainless Steel	DN40, DN50
65TRG25	74mm (W) x 27mm (D)	900mm, 1000mm, 1200mm, 1500mm	316 Stainless Steel	DN40, DN50
65ARG25	74mm (W) x 27mm (D)	900mm, 1000mm, 1200mm, 1500mm	316 Stainless Steel	DN40, DN50

*Delivery charges apply or collection available from Guildford, Surrey. Next day delivery available subject to stock levels.



Linear Channel Drain - 65/25 Range

74mm (W) x 27mm (D)



65PSi25



65PPSi25



65PASi25



65MNDi25



65TRi25



65ARi25

Made-to-Length Kits with a 316 Stainless Steel Channel Base

Product Code	Outer Dimensions	Lengths	Grate Material	Compatible Spigot
65PSi25	74mm (W) x 27mm (D)	Custom	316 Stainless Steel	Custom Size and Position
65PPSi25	74mm (W) x 27mm (D)	Custom	316 Stainless Steel	Custom Size and Position
65PASi25	74mm (W) x 27mm (D)	Custom	316 Stainless Steel	Custom Size and Position
65MNDi25	74mm (W) x 27mm (D)	Custom	316 Stainless Steel	Custom Size and Position
65TRi25	74mm (W) x 27mm (D)	Custom	316 Stainless Steel	Custom Size and Position
65ARi25	74mm (W) x 27mm (D)	Custom	316 Stainless Steel	Custom Size and Position

*Delivery charges apply or collection available from Guildford, Surrey. Lead time 3 weeks.



Linear Channel Drain - 65/40 Range

74mm (W) x 42mm (D)



65PSG40



65TRG40



65ARG40

Modular Kits with a uPVC Channel Base

Product Code	Outer Dimensions	Lengths	Grate Material	Compatible Spigot
65PSG40	74mm (W) x 42mm (D)	900mm, 1000mm, 1200mm, 1500mm	316 Stainless Steel	DN40, DN50
65TRG40	74mm (W) x 42mm (D)	900mm, 1000mm, 1200mm, 1500mm	316 Stainless Steel	DN40, DN50
65ARG40	74mm (W) x 42mm (D)	900mm, 1000mm, 1200mm, 1500mm	316 Stainless Steel	DN40, DN50

*Delivery charges apply or collection available from Guildford, Surrey. Next day delivery available subject to stock levels.



Linear Channel Drain - 65/40 Range

74mm (W) x 42mm (D)



65PSi40



65PPSi40



65PASi40



65TRi40



65ARi40

Made-to-Length Kits with a 316 Stainless Steel Channel Base

Product Code	Outer Dimensions	Lengths	Grate Material	Compatible Spigot
65PSi40	74mm (W) x 42mm (D)	Custom	316 Stainless Steel	Custom Size and Position
65PPSi40	74mm (W) x 42mm (D)	Custom	316 Stainless Steel	Custom Size and Position
65PASi40	74mm (W) x 42mm (D)	Custom	316 Stainless Steel	Custom Size and Position
65TRi40	74mm (W) x 42mm (D)	Custom	316 Stainless Steel	Custom Size and Position
65ARi40	74mm (W) x 42mm (D)	Custom	316 Stainless Steel	Custom Size and Position

*Delivery charges apply or collection available from Guildford, Surrey. Lead time 3 weeks.



Linear Channel Drain - 100/20 Range

106 mm (W) x 23mm (D)



100AAG20



100PSG20



100PPSG20



100PASG20



100MNDG20



100TRG20



100ARG20

Modular Kits with a uPVC Channel Base

Product Code	Outer Dimensions	Lengths	Grate Material	Compatible Spigot
100AAG20	106mm (W) x 23mm (D)	900mm, 1000mm, 1200mm, 1500mm	Oxidised Aluminium	DN40, DN50, DN80, DN100
100PSG20	106mm (W) x 23mm (D)	900mm, 1000mm, 1200mm, 1500mm	316 Stainless Steel	DN40, DN50, DN80, DN100
100PPSG20	106mm (W) x 23mm (D)	900mm, 1000mm, 1200mm, 1500mm	316 Stainless Steel	DN40, DN50, DN80, DN100
100PASG20	106mm (W) x 23mm (D)	900mm, 1000mm, 1200mm, 1500mm	316 Stainless Steel	DN40, DN50, DN80, DN100
100MNDG20	106mm (W) x 23mm (D)	900mm, 1000mm, 1200mm, 1500mm	316 Stainless Steel	DN40, DN50, DN80, DN100
100TRG20	106mm (W) x 23mm (D)	900mm, 1000mm, 1200mm, 1500mm	316 Stainless Steel	DN40, DN50, DN80, DN100
100ARG20	106mm (W) x 23mm (D)	900mm, 1000mm, 1200mm, 1500mm	316 Stainless Steel	DN40, DN50, DN80, DN100

*Delivery charges apply or collection available from Guildford, Surrey. Next day delivery available subject to stock levels.



Linear Channel Drain - 100/20 Range 106 mm (W) x 23mm (D)



100AAi20



100PSi20



100PPSi20



100PASi20



100MNDi20



100TRi20



100ARi20

Made-to-Length Kits with a 316 Stainless Steel Channel Base

Product Code	Outer Dimensions	Lengths	Grate Material	Compatible Spigot
100AAi20	106mm (W) x 23mm (D)	Custom	Oxidised Aluminium	Custom Size and Position
100PSi20	106mm (W) x 23mm (D)	Custom	316 Stainless Steel	Custom Size and Position
100PPSi20	106mm (W) x 23mm (D)	Custom	316 Stainless Steel	Custom Size and Position
100PASi20	106mm (W) x 23mm (D)	Custom	316 Stainless Steel	Custom Size and Position
100MNDi20	106mm (W) x 23mm (D)	Custom	316 Stainless Steel	Custom Size and Position
100TRi20	106mm (W) x 23mm (D)	Custom	316 Stainless Steel	Custom Size and Position
100ARi20	106mm (W) x 23mm (D)	Custom	316 Stainless Steel	Custom Size and Position

*Delivery charges apply or collection available from Guildford, Surrey. Lead time 3 weeks.



Linear Channel Drain - 100/40 Range

106 mm (W) x 42 mm (D)



100PPSi40



100PASi40



100TRi40

Made-to-Length Kits with a 316 Stainless Steel Channel Base

Product Code	Outer Dimensions	Lengths	Grate Material	Compatible Spigot
100PPSi40	106mm (W) x 42mm (D)	Custom	316 Stainless Steel	Custom Size and Position
100PASi40	106mm (W) x 42mm (D)	Custom	316 Stainless Steel	Custom Size and Position
100TRi40	106mm (W) x 42mm (D)	Custom	316 Stainless Steel	Custom Size and Position

*Delivery charges apply or collection available from Guildford, Surrey. Lead time 3 weeks.



Tile Insert

Designed to blend seamlessly with tiled floors.

Our premium Tile Insert drain features a 316 grade stainless steel tile insert tray and frame.

Available in both our 65 and 100 range widths with multiple depths.

Made-to-Length and suitable for tiles up to 25mm thick.

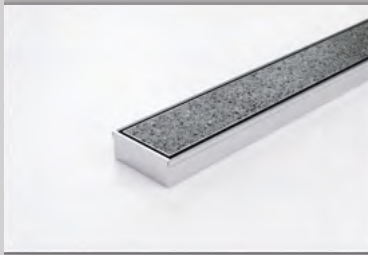
All fittings (End Caps, Spigot, Corner Pieces, Straight Connectors) are welded to the channel.





Tile Insert - 65 Range

74mm (W)



65Tii25

Suitable for 10mm thick tile



65Tii30

Suitable for 12mm thick tile



65Tii40

Suitable for 25mm thick tile

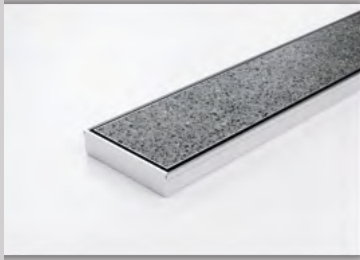
Made-to-Length Unit in 316 Stainless Steel

Product Code	Outer Dimensions	Lengths	Grate Material	Compatible Spigot
65Tii25	74mm (W) x 27mm (D)	Custom	316 Stainless Steel	Custom Size and Position
65Tii30	74mm (W) x 31mm (D)	Custom	316 Stainless Steel	Custom Size and Position
65Tii40	74mm (W) x 42mm (D)	Custom	316 Stainless Steel	Custom Size and Position

*Delivery charges apply or collection available from Guildford, Surrey. Lead time 3 weeks.



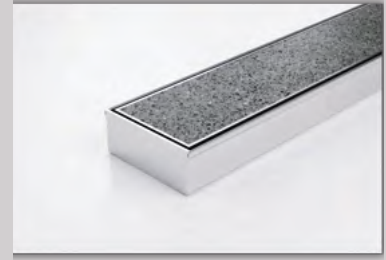
Tile Insert - 100 Range 106 mm (W)



100Tii20
Suitable for 10mm thick Tile



100Tii30
Suitable for 12mm thick Tile



100Tii40
Suitable for 25mm thick Tile

Made-to-Length Unit in 316 Stainless Steel

Product Code	Outer Dimensions	Lengths	Grate Material	Compatible Spigot
100Tii20	106mm (W) x 23mm (D)	Custom	316 Stainless Steel	Custom Size and Position
100Tii30	106mm (W) x 31mm (D)	Custom	316 Stainless Steel	Custom Size and Position
100Tii40	106mm (W) x 42mm (D)	Custom	316 Stainless Steel	Custom Size and Position

*Delivery charges apply or collection available from Guildford, Surrey. Lead time 3 weeks.



Threshold Drains

Seamless continuity between indoor and outdoor areas.

Linear stainless steel drainage with concealed channel for elegant integration into sliding, bi-fold and hinged door applications.

Access & Mobility Code compliant, the threshold range creates a zero threshold for seamless continuity between indoor and outdoor areas.

Manufactured to your specific project requirements, with customised sub-sill tray depth. All fittings (End Caps, Spigot, Corner Pieces, Straight Connectors) are welded to the channel to your requirements.





Threshold Drains - 65 Range

76mm (W) x Custom (D)



65PSTDi



65MNDDi



65TRTDi



65ARTDi



65TiTDi

Made-to-Length Door Track with Sub-Sill Tray

Product Code	Outer Dimensions	Lengths	Grate Material	Compatible Spigot
65PSTDi	76mm (W) x Custom (D)	Custom	316 Stainless Steel	Custom Size and Position
65MNDDi	76mm (W) x Custom (D)	Custom	316 Stainless Steel	Custom Size and Position
65TRTDi	76mm (W) x Custom (D)	Custom	316 Stainless Steel	Custom Size and Position
65ARTDi	76mm (W) x Custom (D)	Custom	316 Stainless Steel	Custom Size and Position
65TiTDi	76mm (W) x Custom (D)	Custom	316 Stainless Steel	Custom Size and Position

*Delivery charges will apply or collection available from Guildford, Surrey. Lead time 3 weeks.



Threshold Drains - 65 Range

76mm (W) x Custom (D)



65PSTDiS



65MNDDiS



65TRTDiS



65ARTDiS



65TiTDiS

Made-to-Length Door Track Only Application

Product Code	Outer Dimensions	Lengths	Grate Material	Compatible Spigot
65PSTDiS	76mm (W) x Custom (D)	Custom	316 Stainless Steel	Custom Size and Position
65MNDDiS	76mm (W) x Custom (D)	Custom	316 Stainless Steel	Custom Size and Position
65TRTDiS	76mm (W) x Custom (D)	Custom	316 Stainless Steel	Custom Size and Position
65ARTDiS	76mm (W) x Custom (D)	Custom	316 Stainless Steel	Custom Size and Position
65TiTDiS	76mm (W) x Custom (D)	Custom	316 Stainless Steel	Custom Size and Position

*Delivery charges will apply or collection available from Guildford, Surrey. Lead time 3 weeks.



Threshold Drains - 100 Range

110mm (W) x Custom (D)



100PSTDi



100MNDDi



100TRTDi



100ARTDi



100TiTDi

Door Track with Sub-Sill Tray

Product Code	Outer Dimensions	Lengths	Grate Material	Compatible Spigot
100PSTDi	110mm (W) x Custom (D)	Custom	316 Stainless Steel	Custom Size and Position
100MNDDi	110mm (W) x Custom (D)	Custom	316 Stainless Steel	Custom Size and Position
100TRTDi	110mm (W) x Custom (D)	Custom	316 Stainless Steel	Custom Size and Position
100ARTDi	110mm (W) x Custom (D)	Custom	316 Stainless Steel	Custom Size and Position
100TiTDi	110mm (W) x Custom (D)	Custom	316 Stainless Steel	Custom Size and Position

*Delivery charges will apply or collection available from Guildford, Surrey. Lead time 3 weeks.



Threshold Drains - 100 Range

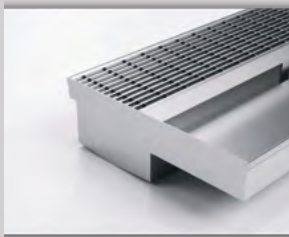
110mm (W) x Custom (D)



100PSTDiS



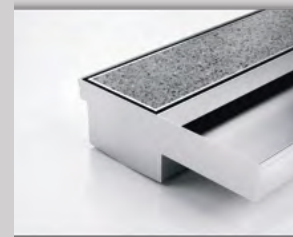
100MNDDiS



100TRTDiS



100ARTDiS



100TiTDiS

Door Track Only Application

Product Code	Outer Dimensions	Lengths	Grate Material	Compatible Spigot
100PSTDiS	110mm (W) x Custom (D)	Custom	316 Stainless Steel	Custom Size and Position
100MNDDiS	110mm (W) x Custom (D)	Custom	316 Stainless Steel	Custom Size and Position
100TRTDiS	110mm (W) x Custom (D)	Custom	316 Stainless Steel	Custom Size and Position
100ARTDiS	110mm (W) x Custom (D)	Custom	316 Stainless Steel	Custom Size and Position
100TiTDiS	110mm (W) x Custom (D)	Custom	316 Stainless Steel	Custom Size and Position

*Delivery charges will apply or collection available from Guildford, Surrey. Lead time 3 weeks.



Square Floor Waste

Offering a luxurious finish and great value wherever a traditional floor waste is required.

Available in a range of grate styles and finishes to compliment your linear drainage. Choose from our unique range of grate styles or tile insert tray.

Available in electroplate metallic and powder coat finishes*. Outlets available in 44mm or 76mm. All fittings are welded to the channel.

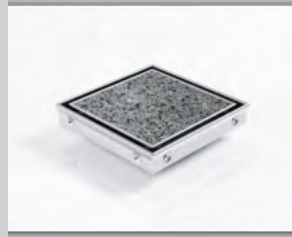


*Electroplate and Powder Coating available at an additional cost



Square Floor Waste

103mm (W) x 103mm (L) 22mm (D)



SQP100Ti



SQ100PPS



SQ100PAS



SQ100MND



SQ100TR



SQ100AR

Square Unit Manufactured in 316 Stainless Steel

Product Code	Outer Dimensions W x L x D	Material	Compatible Spigot
SQP100Ti	130mm (L) x 130mm (W) x 23mm (D)	316 Stainless Steel	DN50, DN80
SQ100PPS	103mm (L) x 103mm (W) x 22mm (D)	316 Stainless Steel	DN50, DN80
SQ100PAS	103mm (L) x 103mm (W) x 22mm (D)	316 Stainless Steel	DN50, DN80
SQ100MND	103mm (L) x 103mm (W) x 22mm (D)	316 Stainless Steel	DN50, DN80
SQ100TR	103mm (L) x 103mm (W) x 22mm (D)	316 Stainless Steel	DN50, DN80
SQ100AR	103mm (L) x 103mm (W) x 22mm (D)	316 Stainless Steel	DN50, DN80

*Delivery charges apply or collection available from Guildford, Surrey. Next day delivery available subject to stock levels.

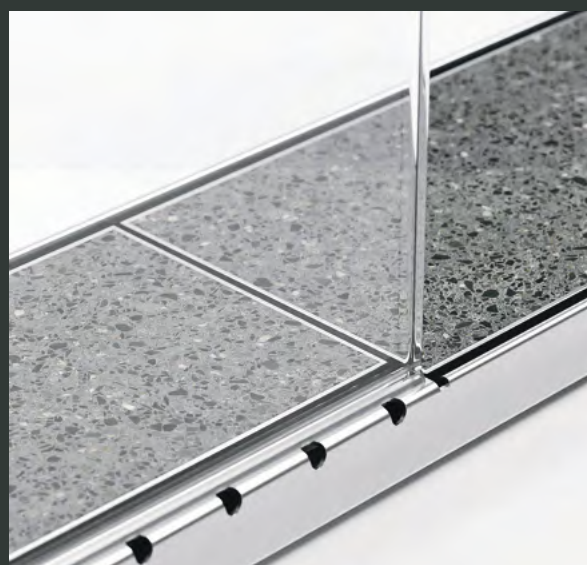


Shower Screen Support

The 120SCS is multi-function, providing dual function as a drain for both sides of the shower screen and a support for the shower screen itself.

Wall-to-wall installation allows a simple dual fall across the bathroom. As a result, this single floor waste can drain the entire bathroom, meaning designers are no longer required to detail the intricate geometries in which the bathroom floor will fall to a traditional centred floor waste.

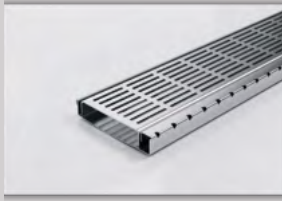
Made from 316 Stainless Steel, the 120SCS is designed for flexibility and ease of installation. Available in all Stormtech designer grates and finishes. All fittings (End Caps, Spigot, Corner Pieces, Straight Connectors) are welded to the channel.





Shower Screen Support

120mm (W) x 24mm (D)



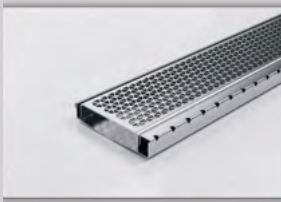
120SCSPSi



120SCSPPSi



120SCSPASi



120SCSMNDi



120SCSTii



120SCSTRI

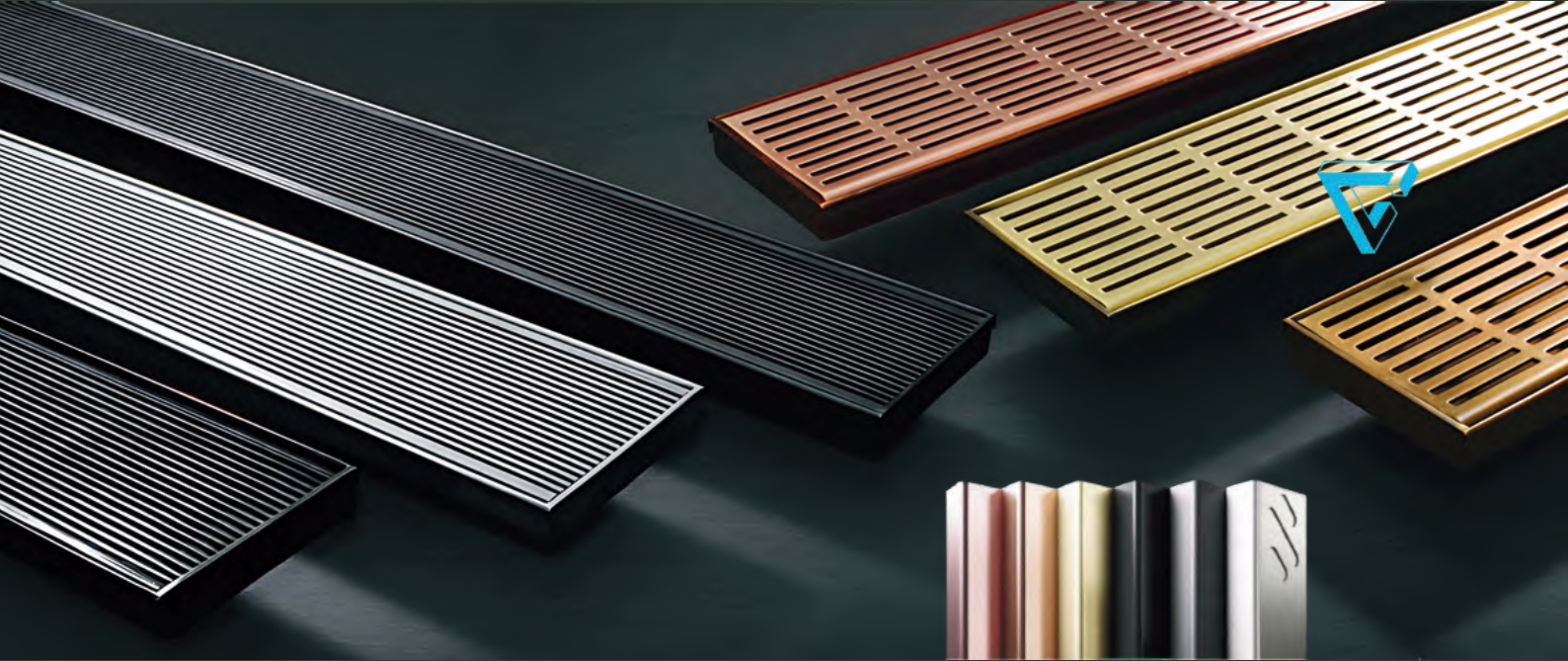


120SCSARi

Made-to-Length Unit in 316 Stainless Steel

Product Code	Outer Dimensions	Lengths	Grate Material	Compatible Spigot
120SCSPSi	120mm (W) x 24mm (D)	Custom	316 Stainless Steel	Custom Size and Position
120SCSPPSi	120mm (W) x 24mm (D)	Custom	316 Stainless Steel	Custom Size and Position
120SCSPASi	120mm (W) x 24mm (D)	Custom	316 Stainless Steel	Custom Size and Position
120SCSMNDi	120mm (W) x 24mm (D)	Custom	316 Stainless Steel	Custom Size and Position
120SCSTii	120mm (W) x 24mm (D)	Custom	316 Stainless Steel	Custom Size and Position
120SCSTRI	120mm (W) x 24mm (D)	Custom	316 Stainless Steel	Custom Size and Position
120SCSARi	120mm (W) x 24mm (D)	Custom	316 Stainless Steel	Custom Size and Position

*Delivery charges will apply or collection available from Guildford, Surrey. Lead time 3 weeks.



Create the perfect finish

Complete your design to perfection, with our unique range of grate and channel finishes. Select from luminous brass, copper, bronze and polished stainless steel, complement a contemporary design with luxurious matt black, or choose your own custom colour finish to any RAL colour.



BRASS



COPPER



BRONZE



MATT BLACK

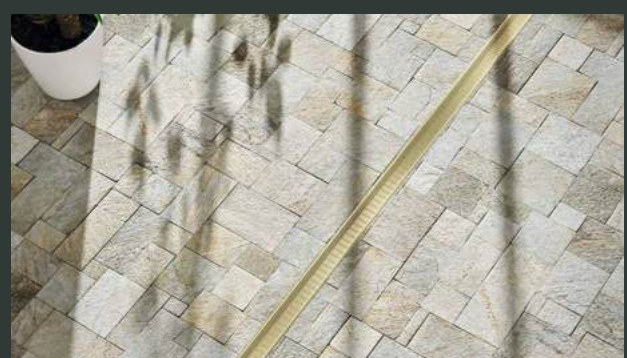
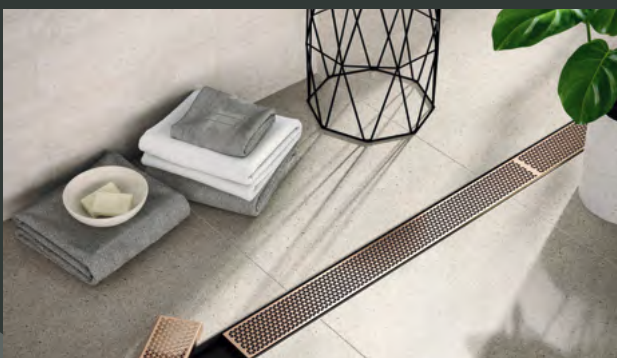
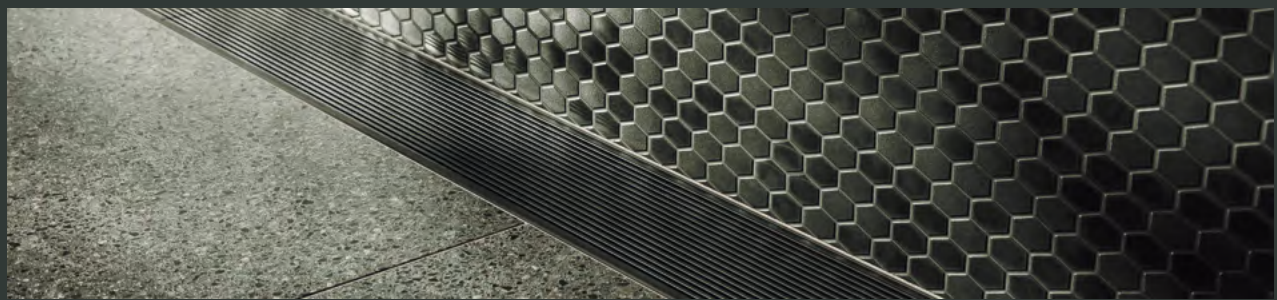


ELECTROPOLISHED



STAINLESS STEEL

Colour finishes are subject to natural variation with time and local environment. Additional charges apply.





GOOD
DESIGN
AWARD
WINNER



Visit slimlinedrain.co.uk for detailed
assembly and installation information



DrainageVE Ltd
Unit 13 Midleton Industrial Estate, Guildford, GU2 8FT

T: 01483 346 460
E: technical@slimlinedrain.co.uk
W: www.slimlinedrain.co.uk

2024/25